

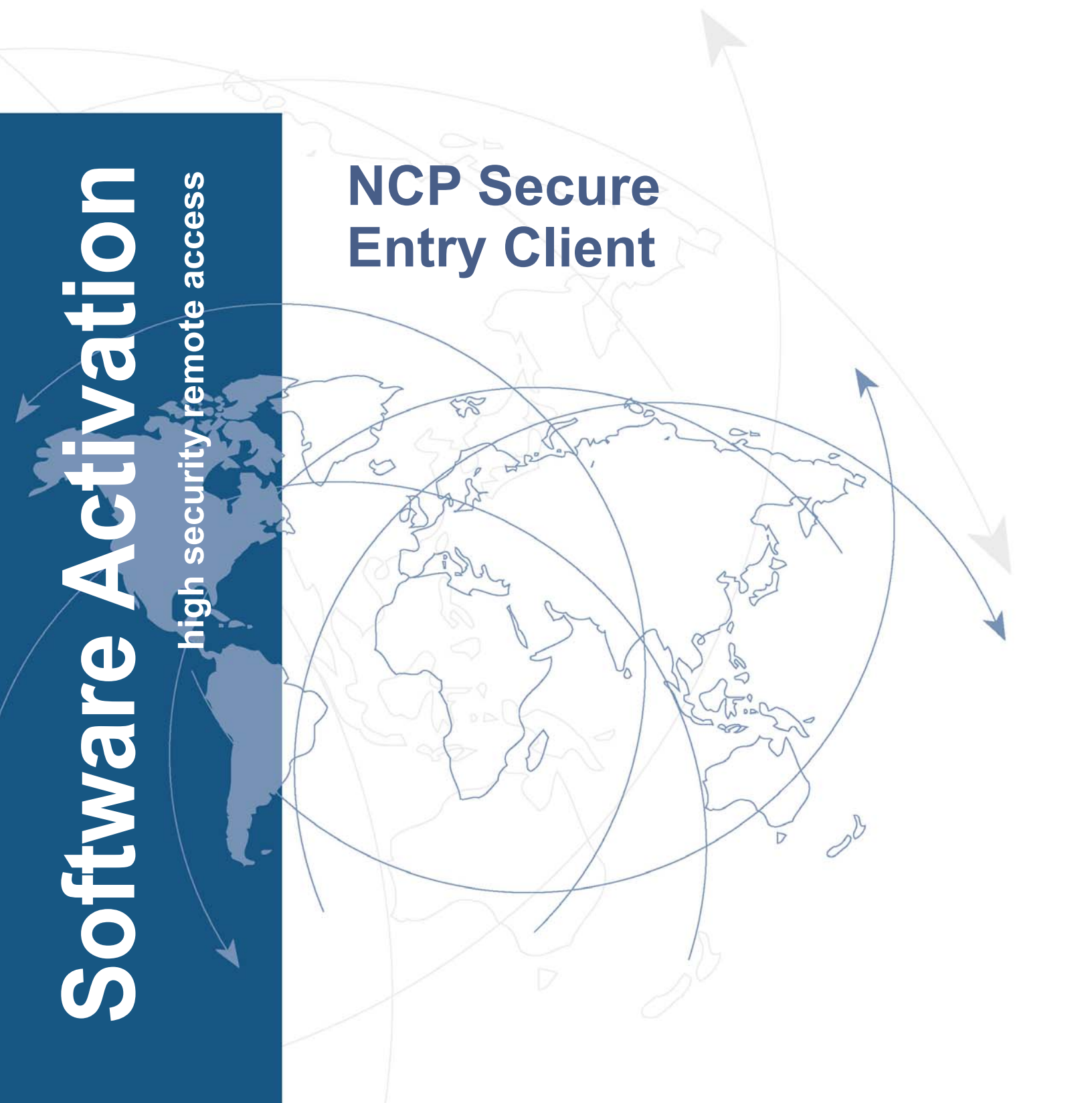
Software Activation

high security remote access

NCP Secure Entry Client

NCP

SECURE COMMUNICATIONS





SECURE COMMUNICATIONS ■

Copyright

Considerable care has been taken in the preparation and publication of this manual, errors in content, typographical or otherwise may occur. If you have any comments or recommendations concerning the accuracy, then please contact NCP as desired.

NCP makes no representations or warranties with respect to the contents or use of this manual, and explicitly disclaims all expressed or implied warranties of merchantability or use for any particular purpose.

Furthermore NCP reserves the right to revise this publication and to make amendments to the content, at any time, without obligation to notify any person or entity of such revisions and changes. This manual is the sole property of NCP and may not be copied for resale, commercial distribution or translated to another language without the express written permission of NCP engineering GmbH.

All trademarks or registered trademarks appearing in this manual belong to their respective owners.

© NCP engineering GmbH,
September 2011

Network
Communications
Products engineering GmbH

GERMANY
Headquarters:
Dombühler Straße 2
D-90449 Nürnberg
Tel.: +49-911-99680
Fax: +49 - 911 - 9968 299
internet
<http://www.ncp-e.com/en>
E-mail: info@ncp-e.com

Software Activation of the Secure Entry Client for Mac OS X



This document describes the software activation of the Secure Client.

Overview of Contents

- **Activation**
- **Test Version Validity Period**
- **Software Activation**
- **Online Activation**
- **Offline Activation**

Activation

The “Help / License Data and Activation” monitor menu item displays the version number of the software currently installed, and, if activated, the licensed software version with corresponding serial number. (Fig. 1 on the right)

The client software is always installed as a test version if client software had not previously been installed on the machine, or if there is a previously installed, older version which has not yet been activated. This also applies if an older version had already been licensed - then this older version will be reset to test version status. In all cases, license data must be entered/re-entered within 30 days using the activation dialog.

The time remaining until software activation, i.e. the validity period of the test version, is displayed in the message bar of the monitor, next to the activation button. (Fig. 2 on the right)

In order to use a full version with no time limitations the software must be activated in the activation dialog using the license key and the serial number that you have received. One mandatory step of the activation process is your acceptance of the license conditions and these can be viewed in the activation dialog after clicking on the appropriate button.

The activation dialog can be opened using either the activation button in the message bar of the monitor, or the monitor menu “Help / License Data and Activation”. The license data can be entered either online or offline using a wizard.

When using offline activation, a file generated after entering the license key and serial number has to be sent to the NCP authentication server, and the resulting activation key, displayed from the web site, has to be noted down and then entered in the licensing window of the Monitor menu, perhaps at a later point in time.

When using online activation, the wizard forwards the licensing data to the web server immediately after entry, resulting in the software being activated without delay.



Fig. 1



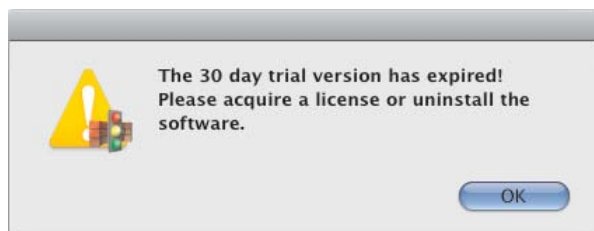
Fig. 2

Test Version Validity Period

A test version is valid for 30 days. After this test period has expired, no further VPN connections can be established until the software has been activated/licensed.

After the software has been installed, each time the software is started the validity period will be shown in the popup window.

In addition, the system will display the duration remaining until the test version expires, and when 10 days remain, a message box will be displayed to remind you that the software has not yet been licensed. This message box will appear once a day.



Once the trial period has expired, only those connections used for software activation/licensing can be established by the Secure Client software.

Software Activation

When the test phase has expired the software must be either activated or de-installed. To activate, select the menu item “Help / License Data and activation”.

This displays the version number of software installed and whether the software is licensed, i.e. you can see whether the test version has expired or that the software has not yet been activated / licensed. (Fig. 1)

Click on the license conditions to display the license agreement text. When activating/licensing the software you must accept the license conditions. Click on the “Activation” button to license the software.



Fig. 1

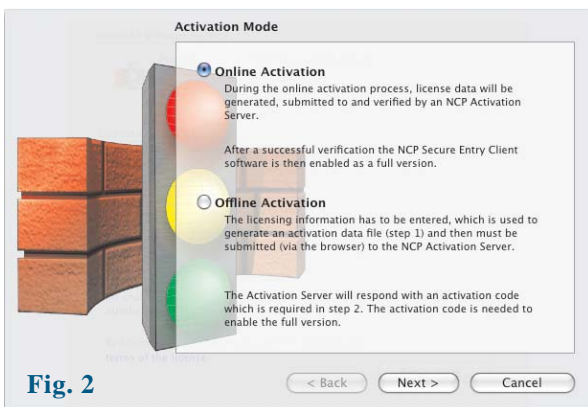


Fig. 2

In the window that appears, select whether you wish to activate the client online or offline by selecting “Online Activation” or “Offline Activation”. (Fig. 2)

When using offline activation, a file generated after entering the license key and serial number has to be submitted to the NCP authentication server, and the resulting activation key, displayed from the web site, has to be noted down and then entered in the licensing window of the Monitor menu, perhaps at a later point in time.

When using online activation, the wizard forwards the licensing data to the web server immediately after entry, resulting in the software being activated without delay.

After selecting the type of activation the license data is to be entered in the appropriate fields. Click on “Next”! (Fig. 3)

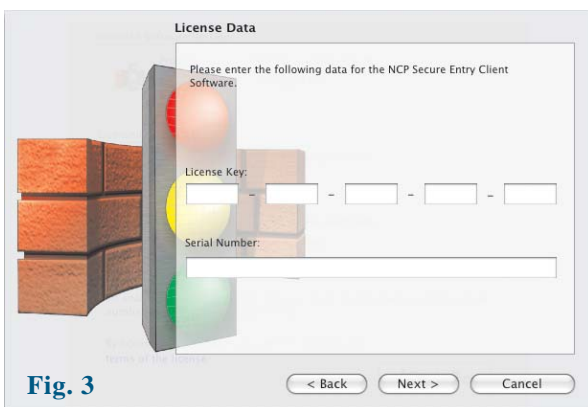


Fig. 3

Online Activation

With online activation, the license data will be transmitted to the NCP Activation Server, providing an internet connection is available. (Fig. 1)

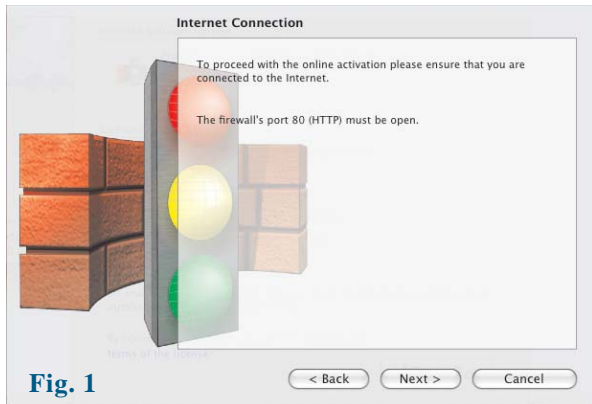


Fig. 1

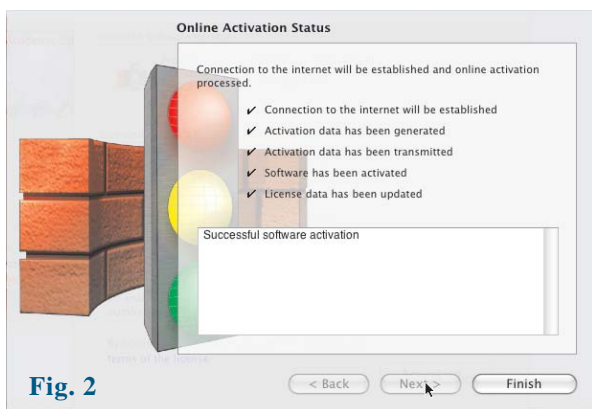


Fig. 2

The software is activated automatically in the specified sequence. (Fig. 2)

As soon as the activation server detects that you are entitled to a newer software license and that the license key agrees with the installed software, then with online activation the new license key will be transferred automatically (license update), and in this way the new features of the software will be activated.



Fig. 3

When the activation process has been successfully completed, details of the license data used to correctly activate the full version of the software are displayed in the window. (Fig. 3)

The software version number and the licensed version number should be the same, if they differ the license has to be updated with a newer license key.

To do this, click on the “Licensing” button. For more information see the description at the end of the Offline Activation section.

Offline Activation

Offline activation is carried out in two steps. First, after entering the license key and serial number, a file is generated and submitted to the NCP activation server via a web browser. Second, the activation key displayed in response by the web site must be noted and then entered in the licensing window of the Monitor menu. (This can also be executed at a later point in time.)

Offline activation is initiated via the monitor menu “Help / License Data and Activation”, and this option can be selected in the first window of the activation wizard (Fig. 1). Click on “Next”.

In the second window of the activation wizard the two steps of the offline activation process are explained (Fig. 2). The first step, generation of the activation file, is selected automatically.

Click on “Next” to continue. Enter the license data in the subsequent window and click on “Next”. (Fig. 3)

Enter directory path and name for the activation file. By default the installation directory of the software and the name ActiData.txt (with serial number) are used. (Fig. 4)

On clicking “Next” the activation file is generated and must now be transferred to the Activation Server (Fig. 5). To do this, open the following URL in a browser:
www.ncp-e.com/en/support/software-activation.html

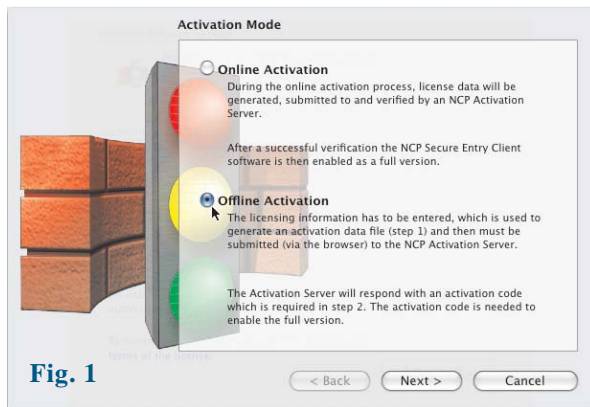


Fig. 1



Fig. 2

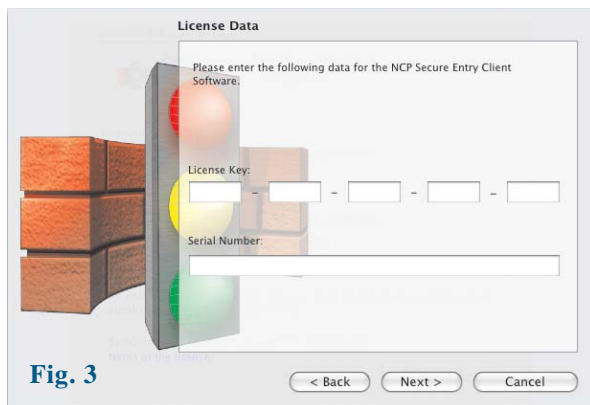


Fig. 3

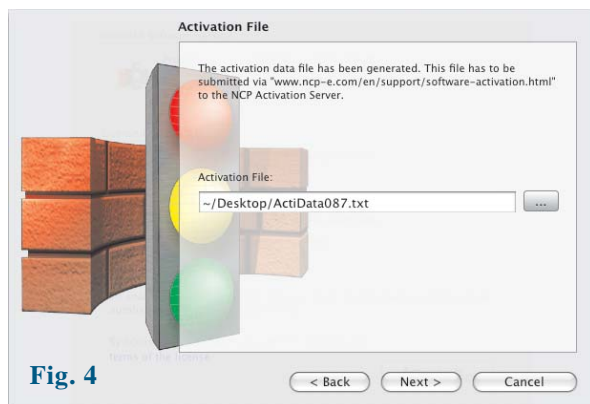


Fig. 4

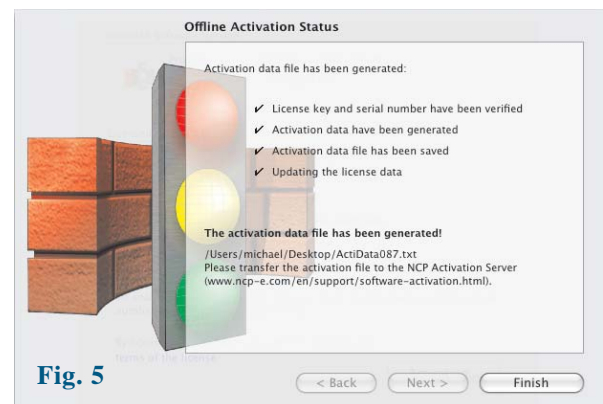


Fig. 5

NCP
SECURE COMMUNICATIONS

[SUPPORT](#)
[LOGIN](#)

Search

[PRODUCTS](#)
[SOLUTIONS](#)
[SUPPORT](#)
[BUY](#)
[PARTNER](#)
[PRESS & NEWS](#)
[DOWNLOADS](#)
[EVENTS](#)
[COMPANY](#)

Software
Software Activation
Update Key
Library
Compatibility
Training
Support Request
FAQs

Activation of NCP secure entry clients

NCP Secure Entry Clients Win32/64, NCP Secure Entry Mac Clients and NCP Secure Entry Windows Mobile Clients (CE) must be activated via the Internet. The software is only licensed after successful activation. This is necessary in the case of new installations or major hardware changes to the end device. Licenses can be issued online or offline. In the case of software updates, you will be issued with a new license key.

The following brochures contain details about software activation:

- [NCP Secure Entry Client Software Activation \(Win32/64\)](#)
- [NCP Secure Entry Windows Mobile Client \(CE\) Software Activation](#)
- [NCP Secure Entry Symbian Client Software Activation](#)

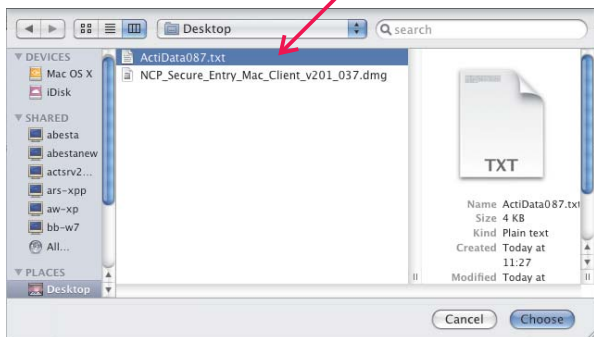
Answers to FAQs can be found under [FAQs](#).

Offline-Activation

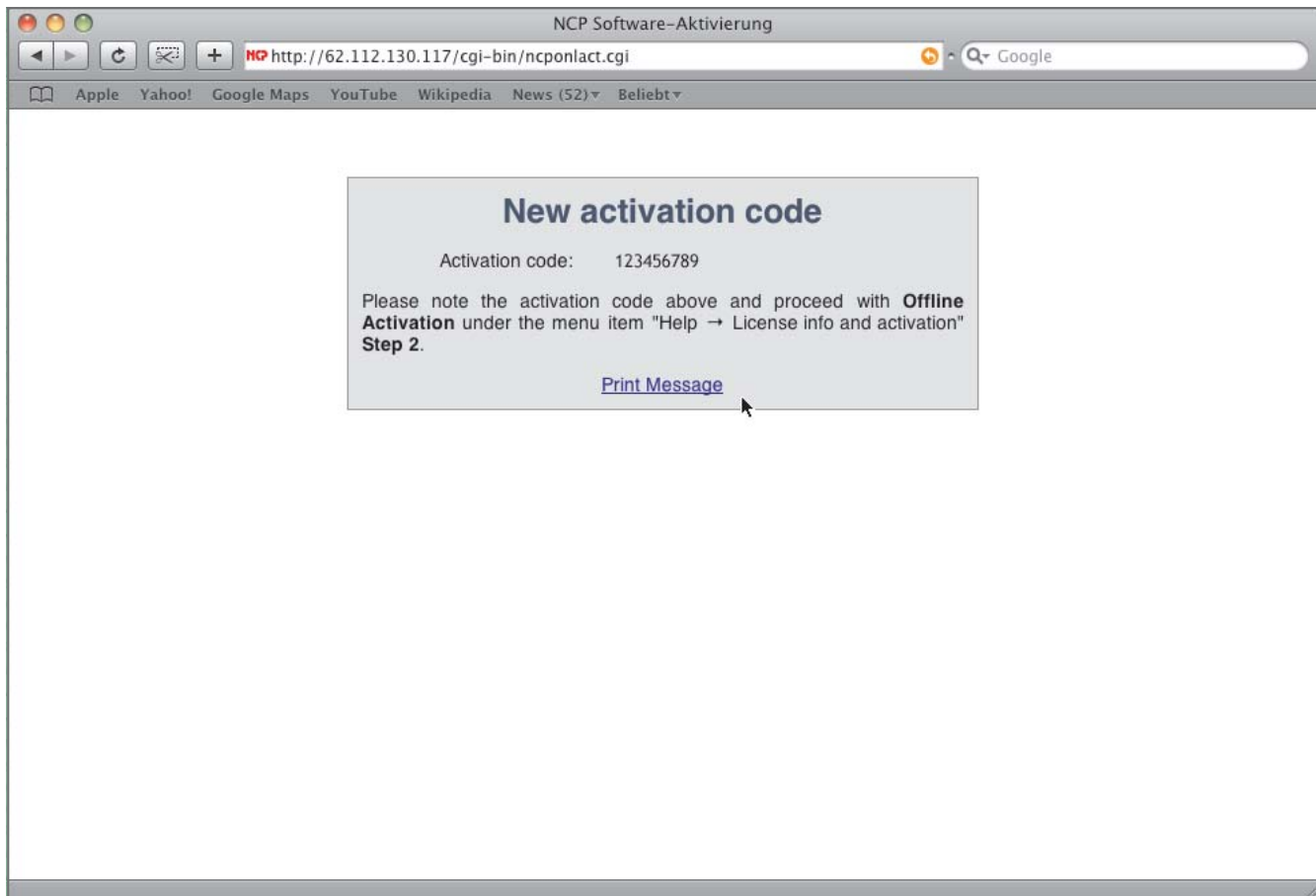
Content of the activation file:

Filename: no file selected

© 2011 NCP Network Communications Products Engineering, Inc. [Sitemap](#) [Legal Disclosure](#) [Privacy Policy](#) [AGBs](#)



There are two ways of submitting the activation file data to the Activation Server. Either open the activation file with TextEdit and use copy & paste to copy the contents of the activation file into the window that is open on the web page, or click on the “Choose File” button and select the activation file. Click on “Send”!



The activation code is then generated and displayed on the web page. Write down or print the activation code and complete the activation process under the menu option "Help / License Data and Activation", by executing the second step of activation in "Offline Activation".

If the Activation Server detects that you are entitled to a newer software license and that the license key agrees with the installed software, then on activation the new license key will be displayed automatically. If you want to activate the new features then write down or print the new license key, conclude the activation process, and then use the new license key.

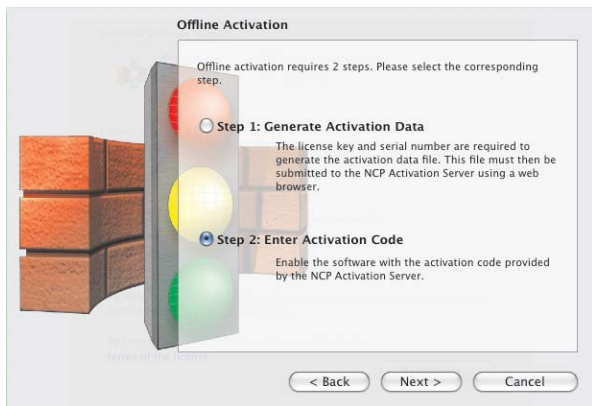


Fig. 1

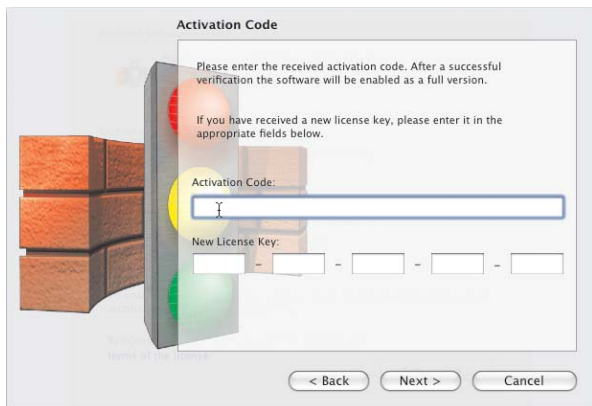


Fig. 2

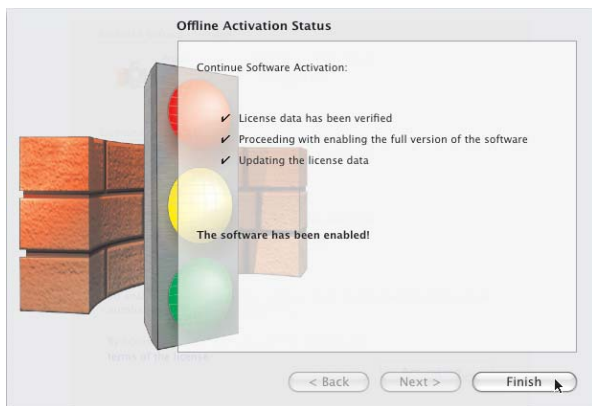


Fig. 3

The second step of Offline Activation is triggered via the monitor menu “Help / License Data and Activation”. After Offline Activation has been selected, select the second step. (Fig. 1)

An activation wizard opens where you can enter the activation code (Fig. 2). After you have entered the activation code click on “Next”.

If you received a new license key from the Activation Server during the offline activation process (see above in the display of the activation code), enter this license key for a license update, by clicking on the “Licensing” button.

Click on “Next”. The license data will be checked and entered.

Offline activation is completed with the subsequent window. (Fig. 3)

After completing the activation the window with the license data will show that the number of the software version and the number of the licensed version are now the same. (See illustration below)



