



SecurITy
Trust Seal
www.teletrust.de/itsmig
made
in
Germany

NCP

Activation

NCP Entry Client



www.ncp-e.com

Contact

For more information or questions about NCP products and services:

Germany

NCP engineering GmbH
Dombühlerstraße 2
D-90449 Nürnberg
Tel.: +49 (911) 9968 0
Homepage: <http://www.ncp-e.com>
Mail: info@ncp-e.com

E-Mail Support:

support@ncp-e.com (german)
helpdesk@ncp-e.com (english)

Support Hotline:

0900 / 1 99 68 00
(only available from Germany, 80 Cent / per minute)
Our support times are from monday to friday from 08:00 am to 17:00 pm.

For a support request we need the following information:

- exact product name
- serial number
- version number
- precise description of the problem
- any error message(s)

Contact USA, North American HQ

NCP engineering, Inc.
19321 US Highway 19 N, Suite 401
Clearwater, FL 33764
Phone: +1 (650) 316-6273

Activation

While considerable care has been taken in the preparation and publication of this manual, errors in content, typo-graphical or otherwise, may occur. If you have any comments or recommendations concerning the accuracy, then please contact NCP. NCP makes no representations or warranties with respect to the contents or use of this manual, and explicitly disclaims all expressed or implied warranties of merchantability or suitability of use for any particular purpose.

Furthermore, NCP reserves the right to revise this publication and to make amendments to the contents, at any time, without obligation to notify any person or entity of such revisions or changes. This manual is the sole property of NCP and may not be copied for resale, commercial distribution or translated to another language without the express written permission of NCP engineering GmbH. All trademarks or registered trademarks appearing in this manual belong to their respective owners.

Table of contents

Introduction	5
Activation	6
Activation for Mac	6
Validity period of the trial version	9
Software activation	11
Online version	13
Offline version	15

Introduction

Intended use

The NCP Secure Entry Client is software that enables users to establish a secure VPN (Virtual Private Network) connection to a corporate network or other protected environment.

Product features

- **Encryption:** The NCP Secure Entry Client encrypts the data traffic between the user device (e.g. laptop, smartphone) and the target network. This prevents unauthorized persons from reading the transmitted data.
- **Authentication:** The client ensures that only authorized users have access to the network by requiring authentication (e.g. user name and password, certificates).
- **Tunnel:** The NCP Entry Client creates a so-called tunnel that securely routes all data traffic through the public Internet as if it were on a private network.

Documents

[Administration manual](#)

The administration manual describes the installation and configuration of the software. This document is aimed at system administrators and IT specialists who are responsible for setting up and managing the VPN infrastructure in a company.

[Activation \(this document\)](#)

The document Activation for the NCP Secure Entry Client shows the licensing options and describes the steps required to convert a software trial version into a fully licensed client. The target group of this document are users of the software.

[Data sheet](#)

The data sheet contains specifications and features of the software. This document is aimed at system administrators and IT specialists who are responsible for setting up and managing the VPN infrastructure in a company.

Activation

The following sections describe how to activate the NCP Secure Entry Client client software from a trial version to a fully licensed version.

The activation process can be carried out either online or offline. In online mode, the license data is transmitted directly to the NCP web server and the software is activated immediately. In offline mode, a file is created and sent to the NCP web server, whereupon an activation key is returned and entered manually. These activation methods apply to macOS systems.

Activation for Mac

In the main menu of the client under the *Help* and *License Data and Activation* tab or after clicking on *Activation* in the footer of the client interface, the software version used and, if applicable, the licensed software version with serial number are displayed.

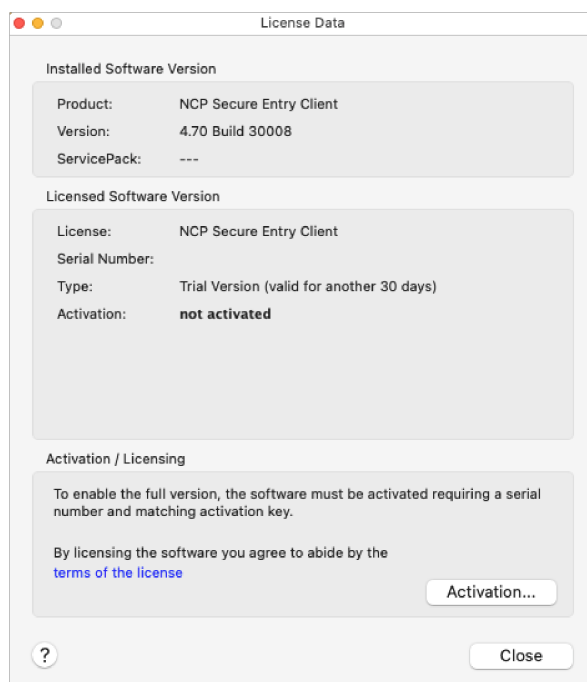


Fig. 1: Overview of license data

The client software is first installed as a test version if no client software has been installed yet or if no software activation has taken place with an already installed previous version. This also applies if the older version has already been licensed. In this case, this version is reset to the status of a trial version and the license data must be entered again within 30 days via the activation dialog.

The remaining time until software activation, i.e. the validity period of the trial version, as well as the notice that the trial version has expired, are displayed in the notification bar of the interface next to the activation button.

In order to be able to use a full version with unlimited validity, the software must be activated with the license key and serial number received in the activation dialog. By activating the software, you accept the license conditions, which you can view by clicking on the corresponding button.

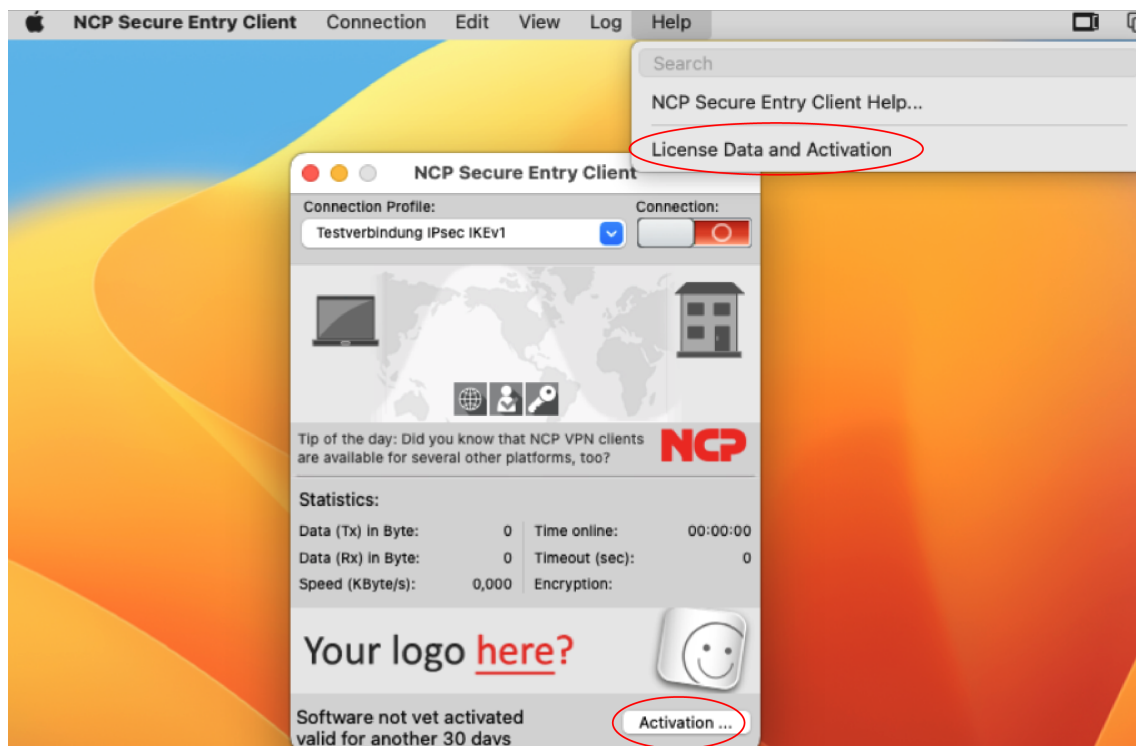


Fig. 2: The interface with the test version display

As described above, the activation dialog can be opened both via *Activation* in the footer area of the client interface and via the main menu of the client under *Help* and *License Data and Activation*. The license data can then be entered either online or offline using a wizard.

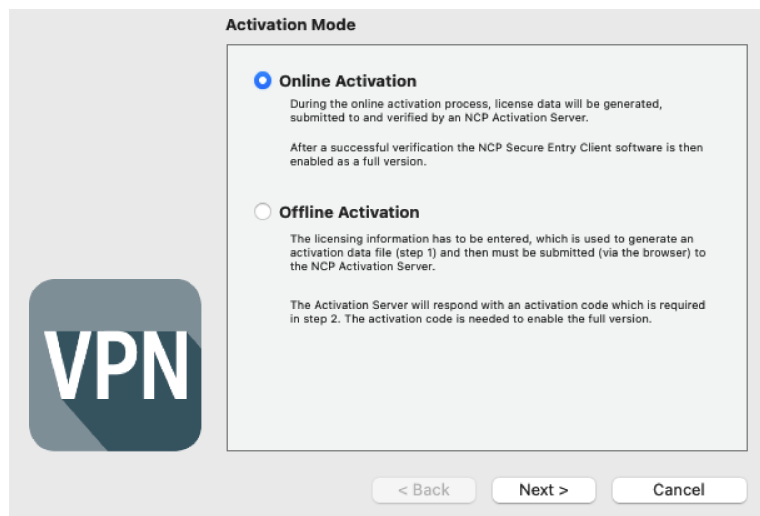


Fig. 3: Selecting the activation method

In the *offline* version, a file that is generated after entering the license key and serial number must be sent to the NCP web server and the activation key displayed on the website must be noted. This activation key can be entered at a later time in the licensing window of the user interface. In the *online* version, the licensing data is forwarded to the NCP web server via a wizard immediately after entry and the software is activated immediately.

Validity period of the trial version

From the time of installation, the validity period is displayed in the pop-up window each time the software is started. In addition, the activation frame at the bottom of the user interface shows how long the trial version can still be used and a message box, from the remaining period of validity of ten days, emphatically draws attention to the fact that the software is not yet licensed. This message box appears once a day.



Fig. 4: At the bottom of the interface, you can see the remaining time.

Once the test phase has expired, the client software can only be used to establish connections to target systems that are used for software activation/licensing. For example, one of the client's profiles can be used to establish an Internet connection for the purpose of licensing.



Fig. 5: Display indicating that the trial period has expired.

Software activation

The software must be activated or uninstalled at the latest at the end of the test phase.

To activate, select the *License Data and Activation* menu item in the *Help* interface menu. Here you can see which software version is involved and how the software is licensed, i.e. that the trial version has expired and the software has not yet been activated/licensed.

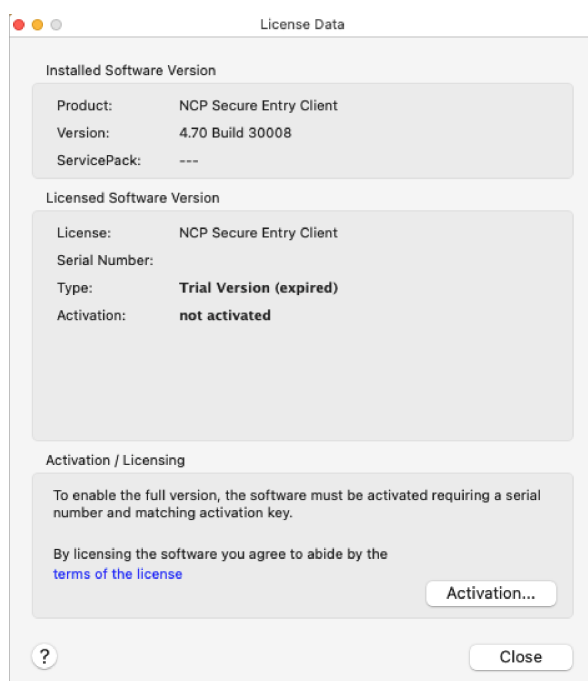


Fig. 6: Overview of the current software activation

The software is activated via the *Activation* button. In the following window, you can choose between an *online* and an *offline* version.

In the *offline* version, a file that is generated after entering the license key and serial number must be sent to the NCP web server and the activation key displayed on the website must be noted. In the *online* version, the licensing data is forwarded to the NCP web server via a wizard immediately after entry and the software is activated immediately.

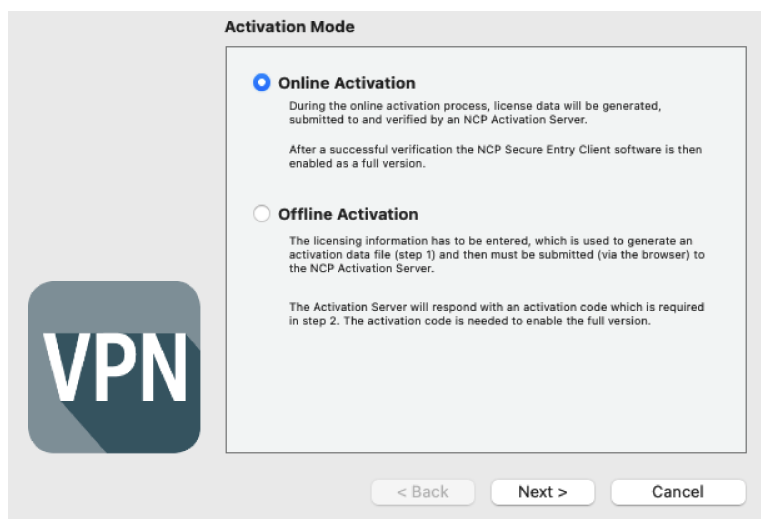


Fig. 7: Selection for online activation

After selecting the activation type, the license data is entered in the fields provided. Then click on *Next*.

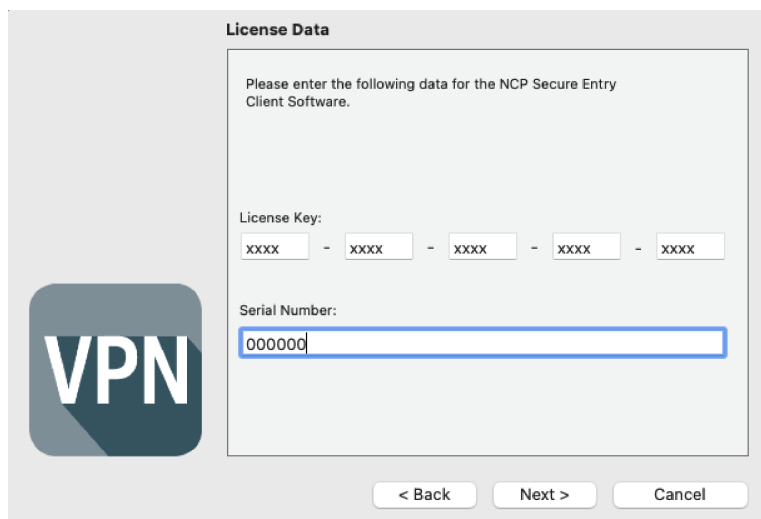


Fig. 8: Enter your license data here.

Online version

During *online* activation, the license data is transferred to the NCP activation server via an Internet connection. The connection is established automatically after you click *Next*. Software activation takes place automatically in the order described below (Fig. 9).

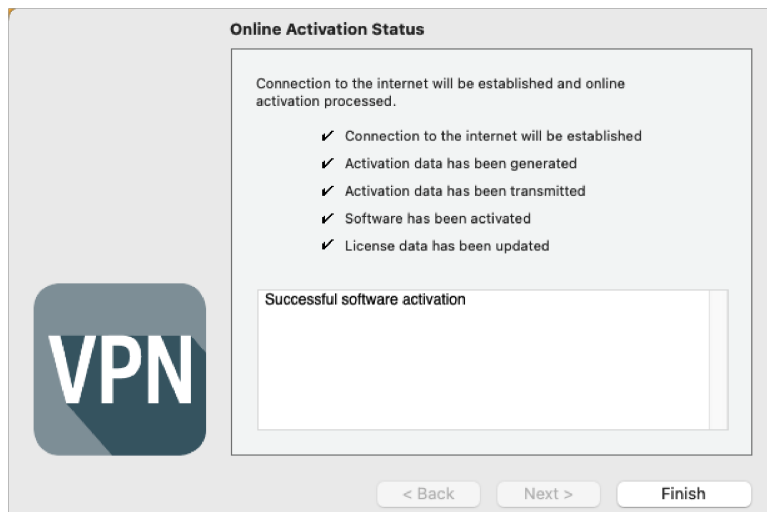


Fig. 9: Automatic connection

As soon as the activation server detects that you are entitled to a newer software license and the license key matches the installed software, the new license key is automatically transferred with the *online* activation (license update) and the new features of the software are thus activated.

Once activation is complete, the license data window shows that the software used is a correctly activated full version.

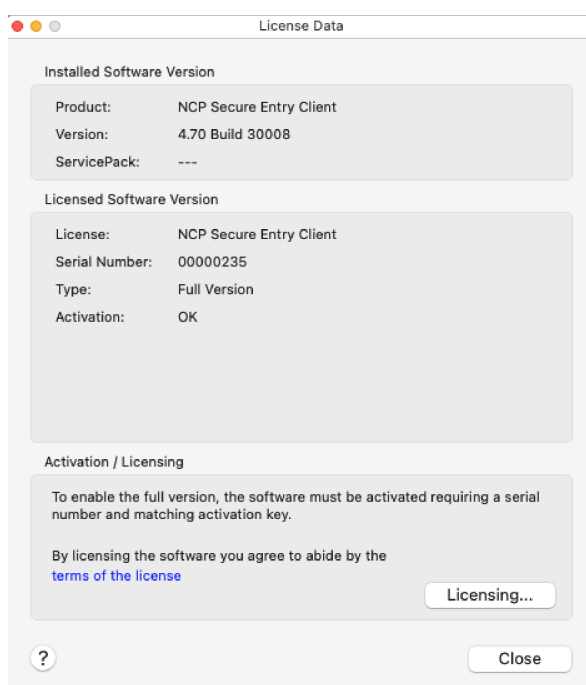


Fig. 10: Overview of the current software activation

The number of the software version and the licensed version should match, otherwise the license must be updated with a newer license key. To do this, click on *Licensing*.

Offline version

The *offline* version is carried out in two steps. In the first step, a file that is generated after entering the license key and serial number must be sent to the NCP web server. An activation code is then displayed on the website, which must be noted in order to be entered in the licensing window of the interface menu in the second step, which can also be carried out at a later time.

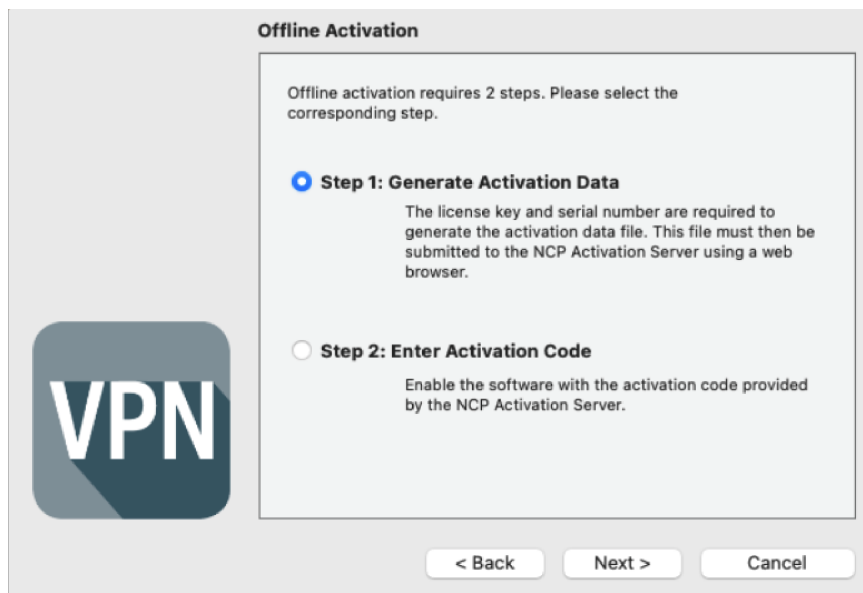


Fig. 11: Step-by-step instructions for the offline variant

The *offline* version is started via the *Help* and *License Data and Activation* tab in the user interface and selected in the first window of the activation wizard. Click on *Next*. The two steps of *offline* activation are explained in the second window of the activation wizard. The first step, creating the activation file, is automatically selected. Click *Next* and enter the license data in the following window.

Fig. 12: Entering the license data

Now enter the name and path for the activation file. By default, the desktop is used as the installation directory and the name *ActiData.txt* (with serial number).

Fig. 13: Save name and location of the activation file.

The activation file is now created and must be transferred to the activation server. To do this, the NCP website must be accessed: <https://www.ncp-e.com/en/service-resources/software-activation>

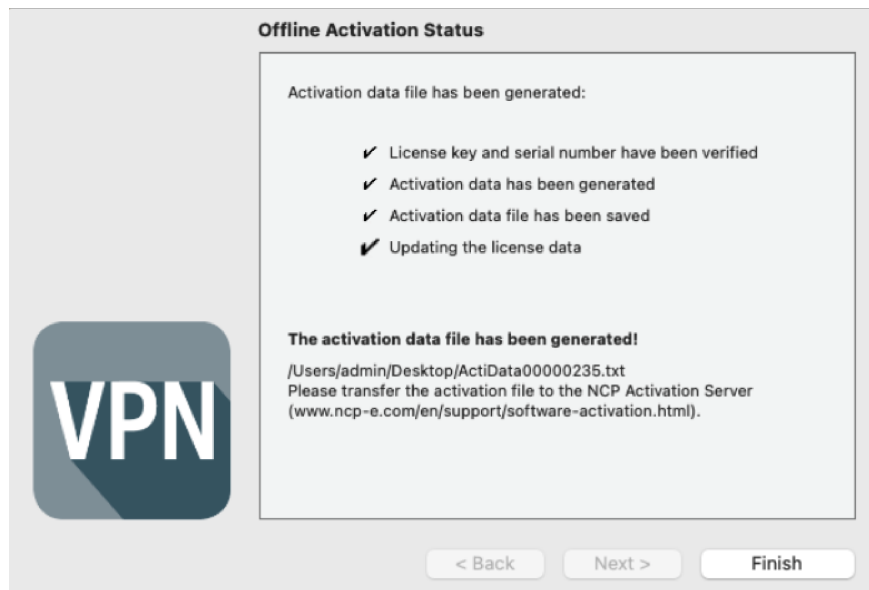


Fig. 14: Creating the activation file

There are two ways to transfer data from the activation file to the NCP activation server. Either copy the content of the activation file manually into the open window of the website or click on the *Browse* button and select the activation file. Then click on *Send*.

The activation code will then be generated and displayed on the website. Make a note of the activation code and continue the activation under the menu item *Help / License Data and Activation*.

If the NCP activation server detects that you are entitled to a newer software license and the license key matches the installed software, the new license key is automatically displayed with the activation. Make a note of the new license key if you want to activate the new features. Finally, use the new license key after you have completed the activation.

The second step of the *offline* version is initiated in the user interface under the *Help* and *License Data and Activation* tab. *Step 2* is selected automatically.

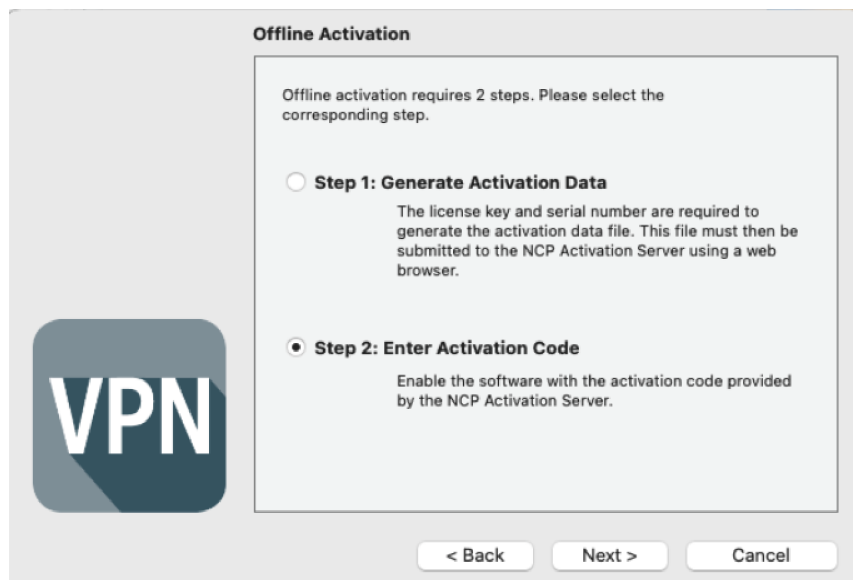


Fig. 15: Step-by-step instructions for the offline variant

An activation wizard window will then open for you to enter the activation code. Once you have entered it, click *Next*.

If you have received a new license key from the NCP activation server during *offline* activation, enter this license key for a license update.

Click on *Next*. The license data is checked and accepted. The offline activation is completed with the following window.

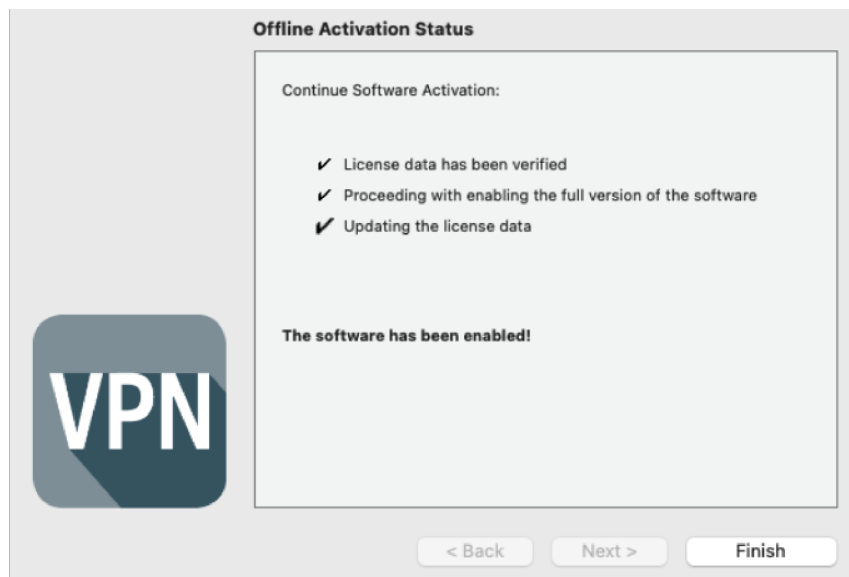


Fig. 16: Completed offline activation

Once the activation is complete, you can read in the window for the license data that the software used is a correctly activated full version.