

SecurITy
made
in
Germany

Trust Seal
www.teletrust.de/itsmig

NCP

Activation

NCP Entry Client



www.ncp-e.com

Contact

For more information or questions about NCP products and services:

Germany

NCP engineering GmbH
Dombühlerstraße 2
D-90449 Nürnberg
Tel.: +49 (911) 9968 0
Homepage: <http://www.ncp-e.com>
Mail: info@ncp-e.com

E-Mail Support:

support@ncp-e.com (german)
helpdesk@ncp-e.com (english)

Support Hotline:

0900 / 1 99 68 00
(only available from Germany, 80 Cent / per minute)
Our support times are from monday to friday from 08:00 am to 17:00 pm.

For a support request we need the following information:

- exact product name
- serial number
- version number
- precise description of the problem
- any error message(s)

Contact USA, North American HQ

NCP engineering, Inc.
19321 US Highway 19 N, Suite 401
Clearwater, FL 33764
Phone: +1 (650) 316-6273

Activation

While considerable care has been taken in the preparation and publication of this manual, errors in content, typo-graphical or otherwise, may occur. If you have any comments or recommendations concerning the accuracy, then please contact NCP. NCP makes no representations or warranties with respect to the contents or use of this manual, and explicitly disclaims all expressed or implied warranties of merchantability or suitability of use for any particular purpose.

Furthermore, NCP reserves the right to revise this publication and to make amendments to the contents, at any time, without obligation to notify any person or entity of such revisions or changes. This manual is the sole property of NCP and may not be copied for resale, commercial distribution or translated to another language without the express written permission of NCP engineering GmbH. All trademarks or registered trademarks appearing in this manual belong to their respective owners.

Table of contents

Introduction	5
Activation	6
Activation for Windows	6
Validity period of the trial version	9
Software activation	11
Online version	13
Offline version	17
Check for updates	23

Introduction

Intended use

The NCP Secure Entry Client is software that enables users to establish a secure VPN (Virtual Private Network) connection to a corporate network or other protected environment.

Product features

- **Encryption:** The NCP Secure Entry Client encrypts the data traffic between the user device (e.g. laptop, smartphone) and the target network. This prevents unauthorized persons from reading the transmitted data.
- **Authentication:** The client ensures that only authorized users have access to the network by requiring authentication (e.g. user name and password, certificates).
- **Tunnel:** The NCP Entry Client creates a so-called tunnel that securely routes all data traffic through the public Internet as if it were on a private network.

Documents

[Administration manual](#)

The administration manual describes the installation and configuration of the software. This document is aimed at system administrators and IT specialists who are responsible for setting up and managing the VPN infrastructure in a company.

[Activation \(this document\)](#)

The document Activation for the NCP Secure Entry Client shows the licensing options and describes the steps required to convert a software trial version into a fully licensed client. The target group of this document are users of the software.

[Data sheet](#)

The data sheet contains specifications and features of the software. This document is aimed at system administrators and IT specialists who are responsible for setting up and managing the VPN infrastructure in a company.

Activation

The following sections describe how to activate the NCP Secure Entry Client client software from a trial version to a fully licensed version.

The activation process can be carried out either online or offline. In online mode, the license data is transmitted directly to the NCP web server and the software is activated immediately. In offline mode, a file is created and sent to the NCP web server, whereupon an activation key is returned and entered manually. These activation methods apply to Windows systems.

Activation for Windows

In the main menu of the client under "Help / License Data and Activation" or after clicking on the "Activation" button in the footer of the client interface, the software version used and, if applicable, the licensed software version with serial number are displayed.

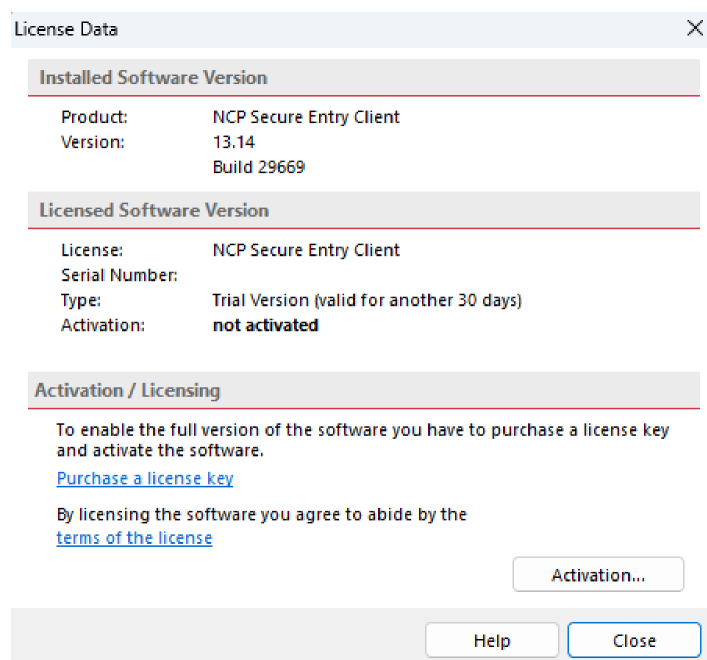


Fig. 1: Overview of the license data

The client software is always initially installed as a test version if no client software has yet been installed or no software activation has yet taken place with an older version already installed. This also applies if the older version has already been licensed - in this case, this version is reset to the status of a trial version and the license data must be entered again within 30 days via the activation dialog.

The remaining time until software activation, i.e. the validity period of the trial version, as well as the notice that the trial version has expired, are displayed in the notification bar of the interface next to the activation button.

In order to be able to use a full version with unlimited validity, the software must be activated with the license key and serial number received in the activation dialog. By activating the software, you accept the license conditions, which you can view by clicking on the corresponding button.

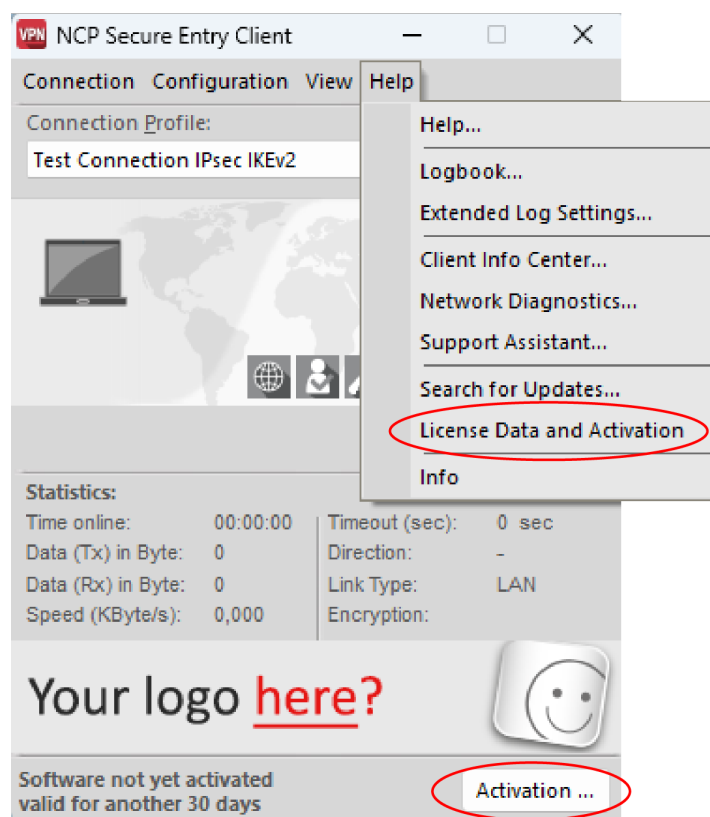


Fig. 2: The interface with the trial version display

As described above, the activation dialog can be opened either via the "Activation" button in the footer of the client interface or via the main menu of the client under "Help / License Data and Activation". The license data can then be entered either online or offline using a wizard.

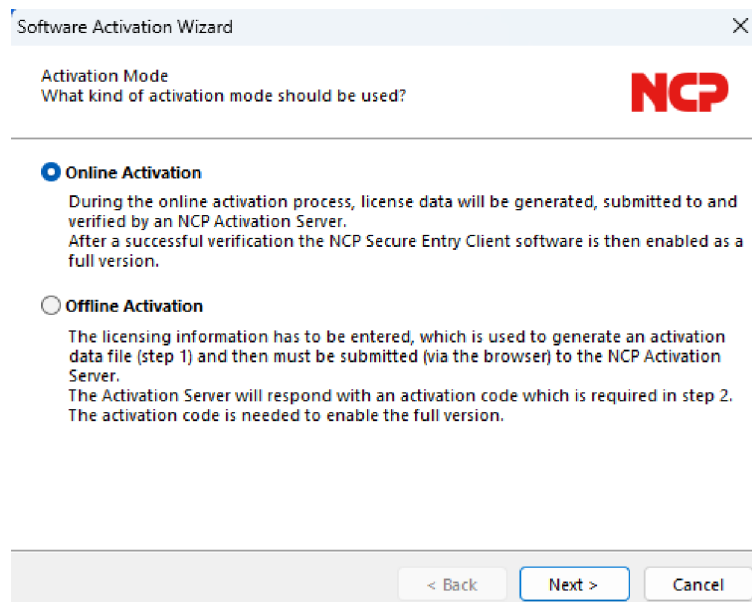


Fig. 3: Selecting the activation type

In the offline version, a file that is generated after entering the license key and serial number must be sent to the NCP web server and the activation key displayed on the website must be noted. This activation key can be entered at a later time in the licensing window of the interface menu. In the online version, the licensing data is forwarded to the NCP web server via a wizard immediately after entry and the software is activated immediately.

Validity period of the trial version

From the time of installation, the validity period is displayed in the pop-up window each time the software is started. In addition, the activation frame at the bottom of the user interface shows how long the trial version can still be used and a message box, from the remaining period of validity of ten days, emphatically draws attention to the fact that the software is not yet licensed. This message box appears once a day.

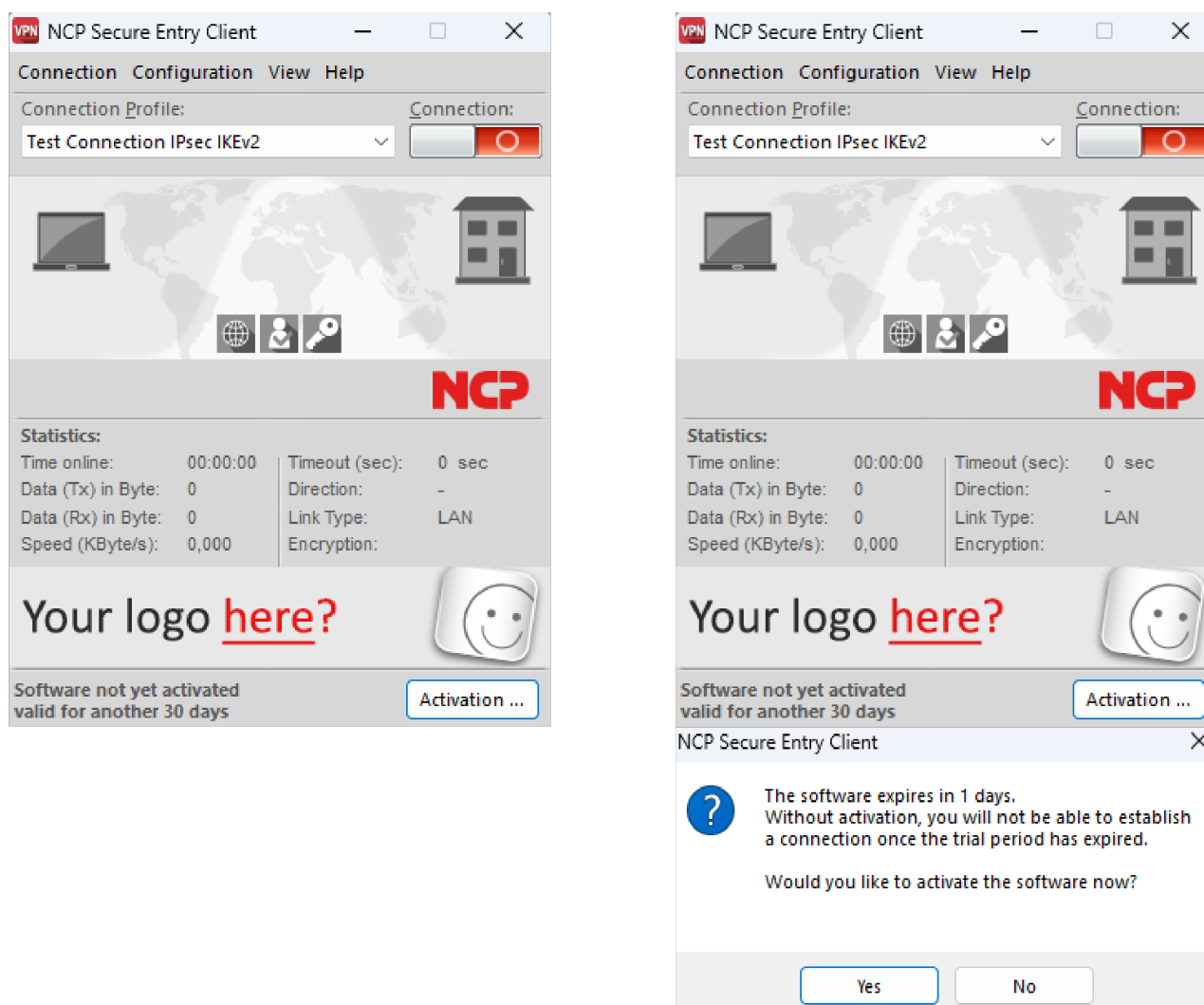


Fig. 4: At the bottom of the interfaces you can see the remaining time periods.

Once the test phase has expired, the client software can only be used to establish connections to target systems that are used for software activation/licensing. For example, one of the client's profiles can be used to establish an Internet connection for the purpose of licensing.

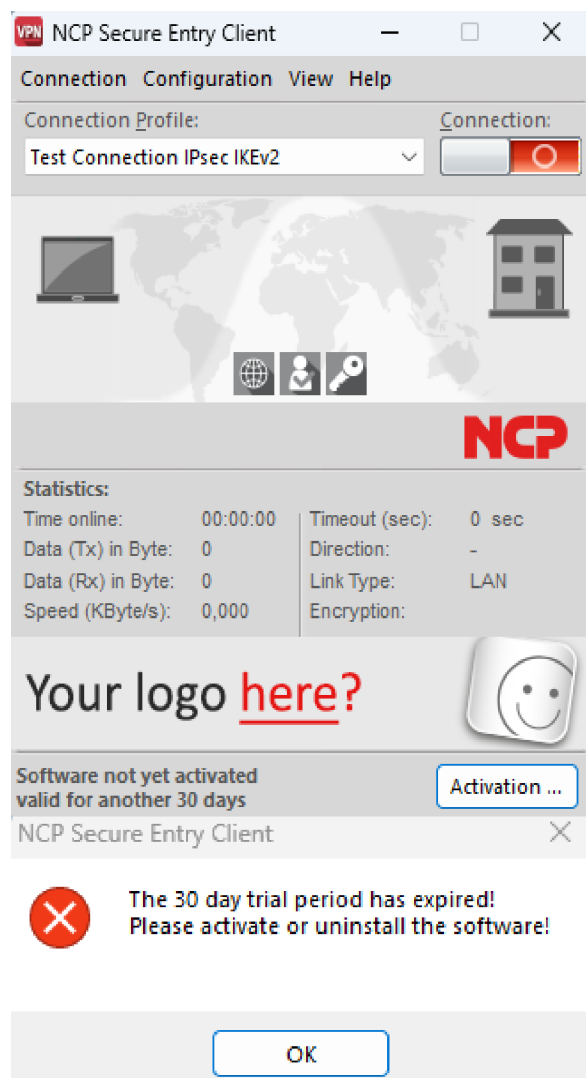


Fig. 5: Indication that the test phase has expired.

Software activation

The software must be activated or uninstalled at the latest when the test phase has expired.

To activate, select the "License Data and Activation" menu item in the "Help" interface menu. Here you can see which software version is involved and how the software is licensed, i.e. that the trial version has expired and the software has not yet been activated/licensed.

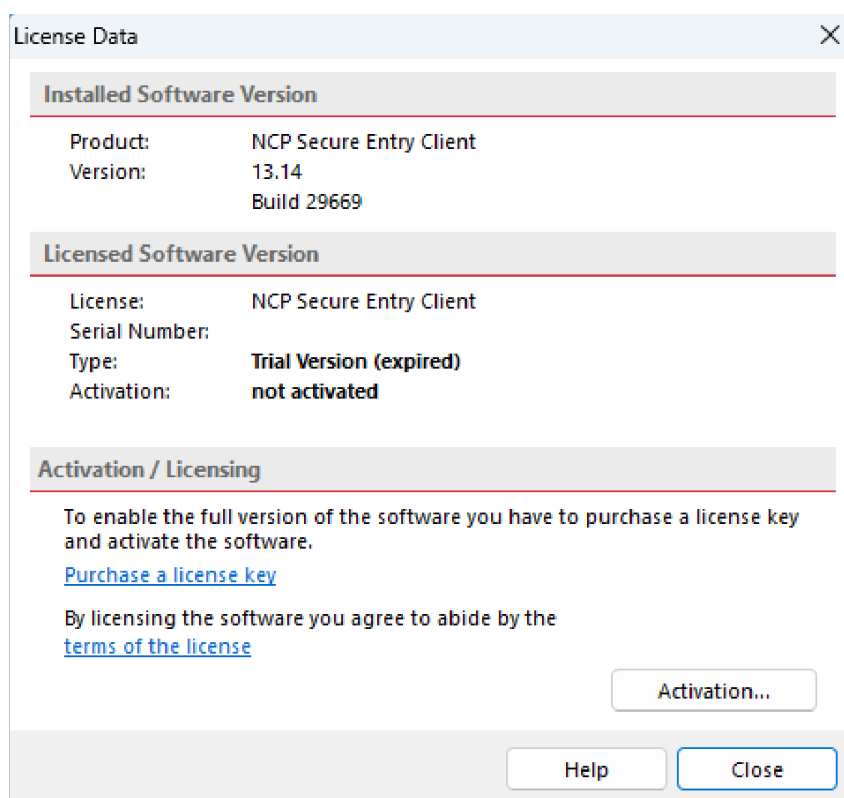


Fig. 6: Overview of the current software activation

To activate the software, click on the "Activation" button. In the following window, you can choose between an *online* and an *offline* version.

In the *offline* version, a file that is generated after entering the license key and serial number must be sent to the NCP web server and the activation key displayed on the website must be noted. In the *online* version, the licensing data is forwarded to the NCP web server via a wizard immediately after entry and the software is activated immediately.

Software Activation Wizard

Activation Mode
What kind of activation mode should be used?

Online Activation
During the online activation process, license data will be generated, submitted to and verified by an NCP Activation Server.
After a successful verification the NCP Secure Entry Client software is then enabled as a full version.

Offline Activation
The licensing information has to be entered, which is used to generate an activation data file (step 1) and then must be submitted (via the browser) to the NCP Activation Server.
The Activation Server will respond with an activation code which is required in step 2.
The activation code is needed to enable the full version.

< Back Next > Cancel

Fig. 7: Selection for online activation

After selecting the activation type, the license data is entered in the fields provided. Then click on "Next".

Software Activation Wizard

License Data
Please insert license data

Please enter the following data for the NCP Secure Entry Client Software.

License Key:
XXXX - XXXX - XXXX - XXXX - XXXX

Serial Number:
00000000

< Back Next > Cancel

Fig. 8: Enter your license data here.

Online version

During *online* activation, the license data is transferred to the NCP activation server via an Internet connection. This can be established via a standard Internet connection or via the Entry Client.

If the Internet connection is not to be established via the Entry Client, the connection must first be established in order to then start the activation wizard via the "Help / License Data and Activation" interface menu.

If the Entry Client is to be used to establish a connection to the Internet without an existing profile (no check mark set), the connection is established via the browser (Fig. 9 below). Make sure that port 80 (for HTTP) is enabled if the firewall is activated. (If a proxy server is configured in the operating system, its settings can be adopted by clicking on "Proxy Settings"). Click on "Next". The Internet connection via the Entry Client does not need to be established before activation.

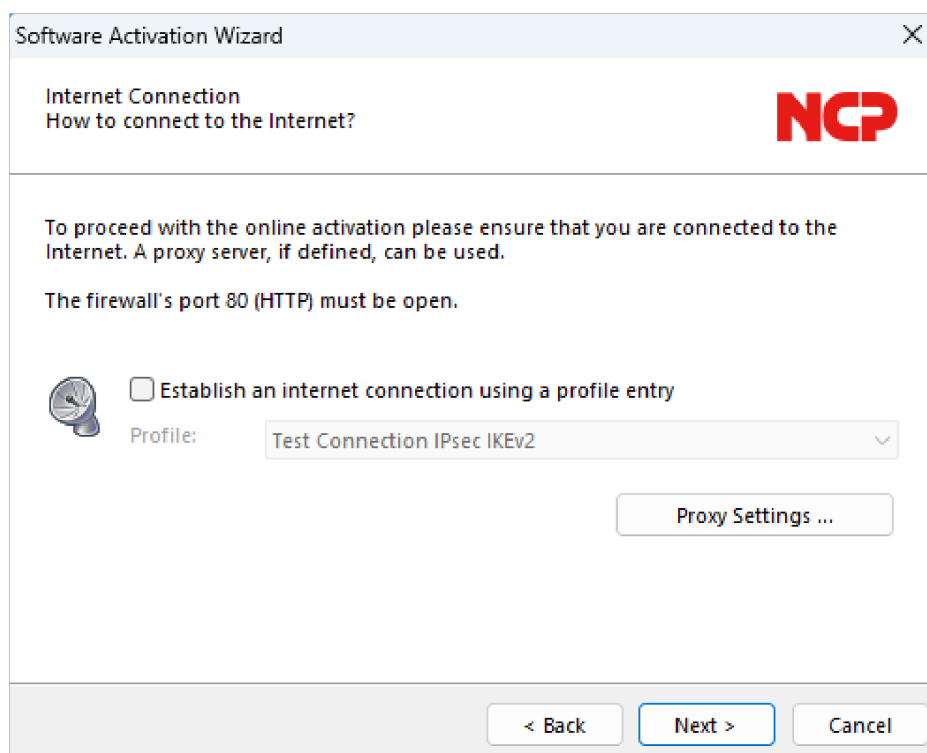


Fig. 9: If the box is not checked, the connection is established via the browser.

The Entry Client connection to the Internet can also be used with a suitable profile (check mark set). This is necessary, for example, if activation is to take place via a VPN connection. It is important to ensure that port 80 (for HTTP) is enabled when the firewall is activated. (If a proxy server is configured in the operating system, its settings can be adopted by clicking on "Proxy Settings"). Once the profile has been selected, click on "Next". The Internet connection via the Entry Client does not need to be established before activation.

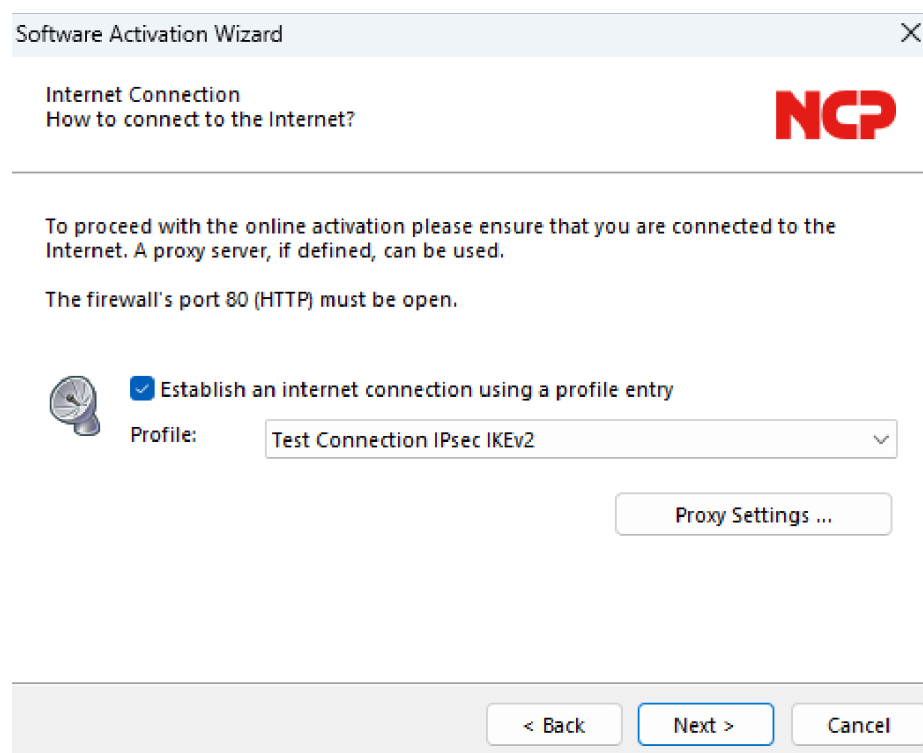


Fig. 10: If the check mark is set, the connection can be established via a VPN connection.

The connection is established automatically after the "Next" button is clicked.

The software activation takes place automatically in the specified order as shown below (Fig. 11 below).

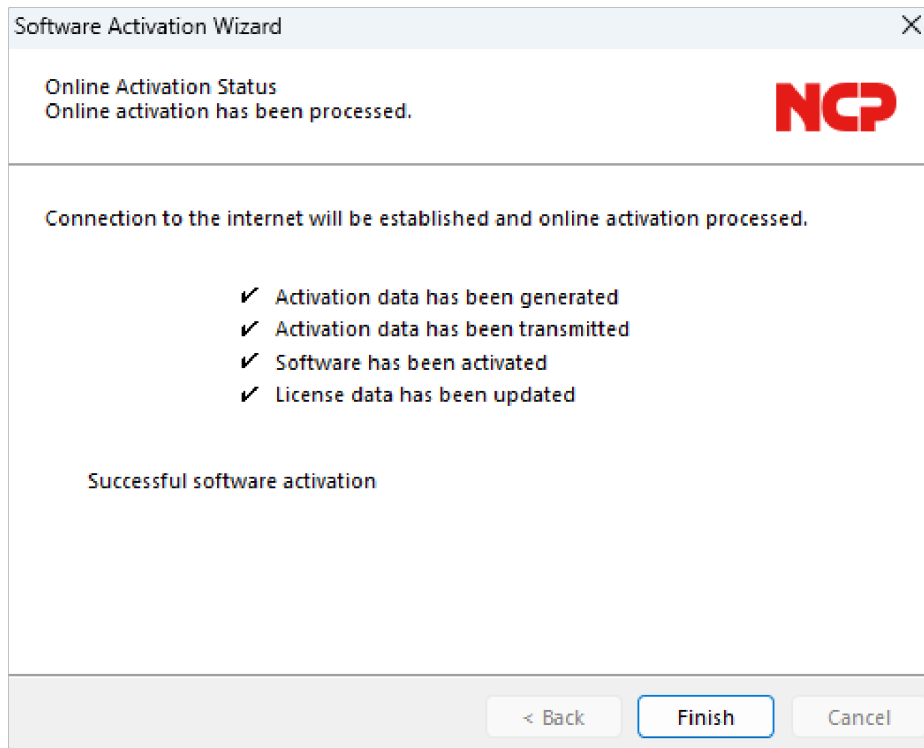


Fig. 11: Automatic connection setup

As soon as the NCP activation server detects that you are entitled to a newer software license and the license key matches the installed software, the new license key is automatically transferred with the online activation (license update) and the new features of the software are thus activated. (Please refer to the [Check for updates](#) ²³ section below).

Once activation is complete, the license data window (Fig. 12 below) shows that the software used is a correctly activated full version.

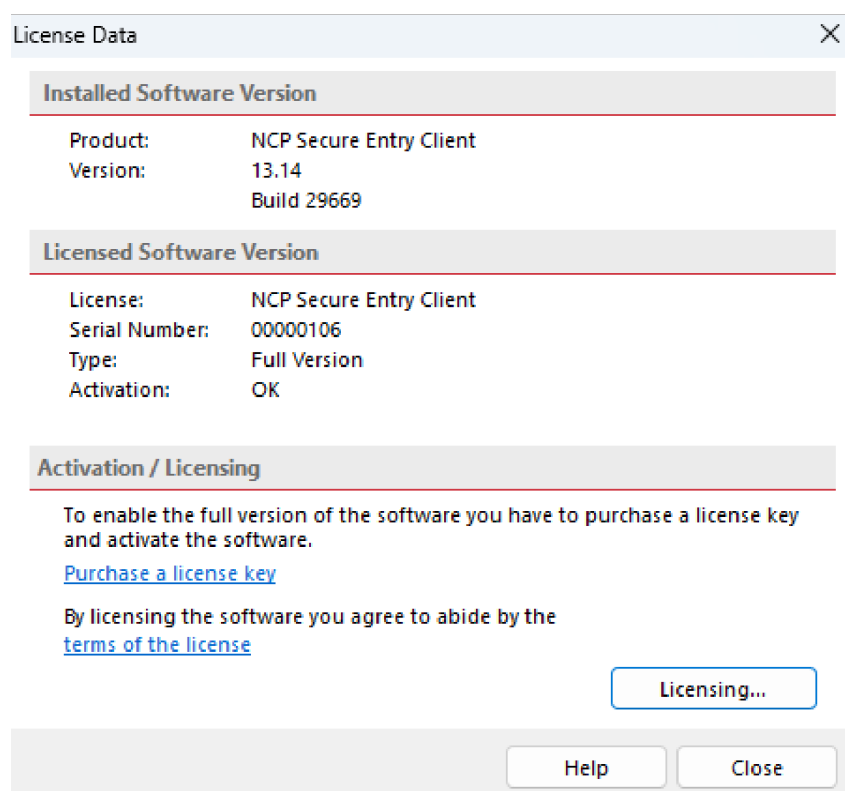


Fig. 12: Overview of the current software activation

The number of the software version and the licensed version should match, otherwise the license must be updated with a newer license key. To do this, click the "Licensing" button. Please also refer to the description at the end of the *offline* version.

Offline version

The *offline* version is carried out in two steps. In the first step, a file that is generated after entering the license key and serial number must be sent to the NCP web server. An activation code is then displayed on the website, which must be noted in order to be entered in the licensing window of the interface menu in the second step, which can also be carried out at a later time.

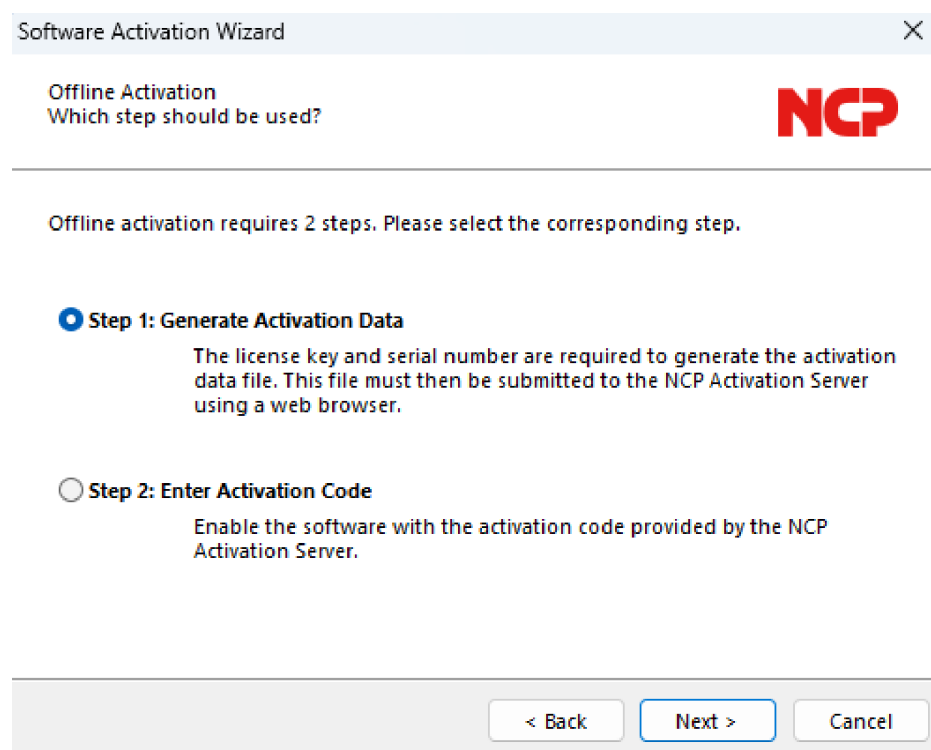
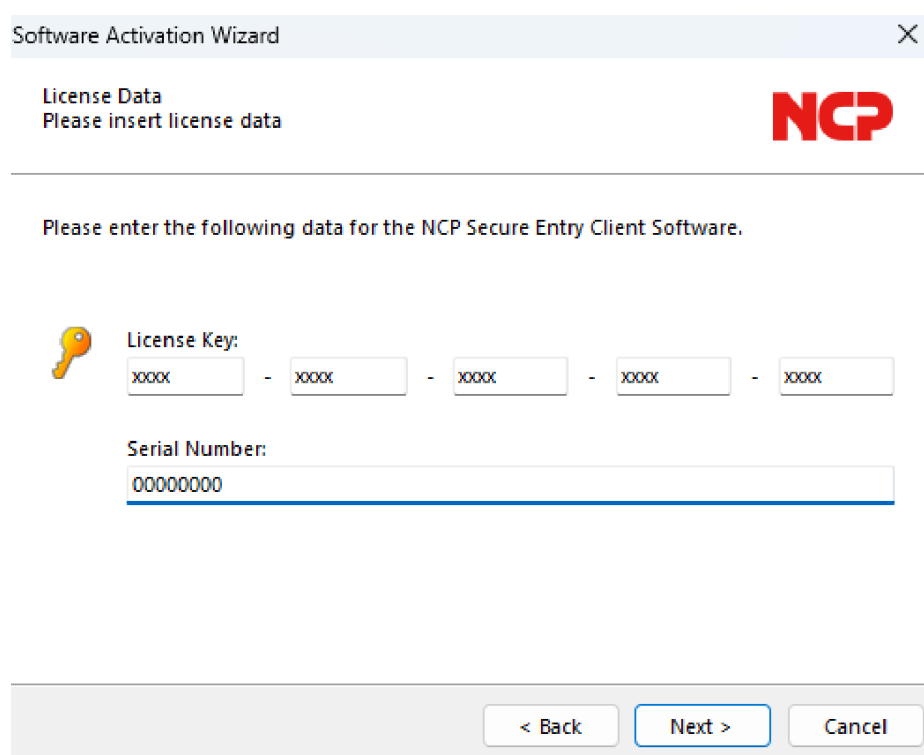


Fig. 13: Step-by-step instructions for the offline version

The *offline* version is started via the interface menu "Help / License Data and Activation" and selected in the first window of the activation wizard. Click on "Next". The two steps of *offline* activation are explained in the second window of the activation wizard (Fig. 13 above). The first step, creating the activation file, is automatically selected. Click on the button with "Next" and enter the license data in the following window. Click "Next" .



Software Activation Wizard

License Data
Please insert license data

Please enter the following data for the NCP Secure Entry Client Software.

License Key:
xxxx - xxxx - xxxx - xxxx - xxxx

Serial Number:
00000000

< Back Next > Cancel

Fig. 14: Entering the license data

Now enter the name and path for the activation file. By default, the desktop is used as the installation directory and the name *ActiData.txt* (with serial number).

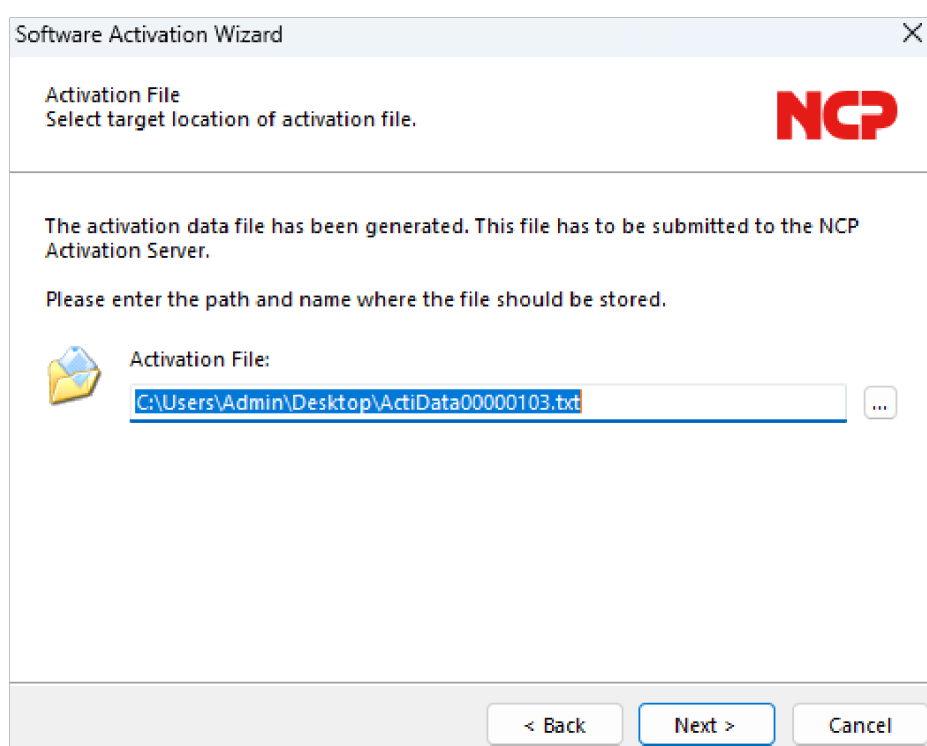


Fig. 15: Save name and location of the activation file

Now the activation file is created, which must be transferred to the NCP activation server. To do this, the NCP website must be called up:

<https://www.ncp-e.com/en/service-resources/software-activation>

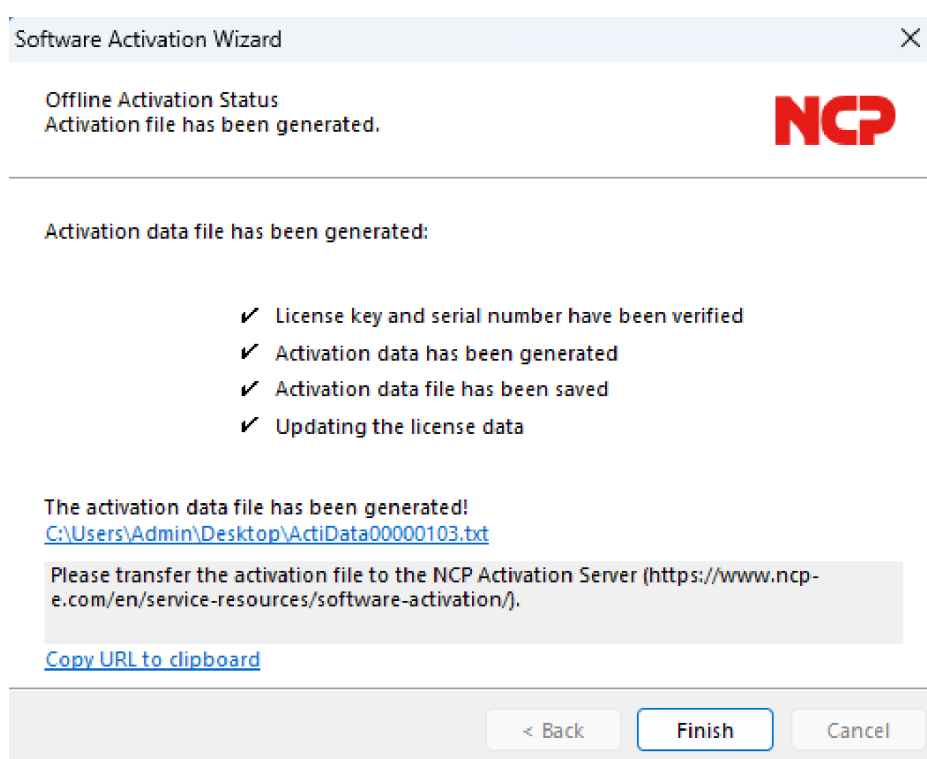


Fig. 16: Creating the activation file

There are two ways to transfer data from the activation file to the NCP activation server. Either copy the content of the activation file manually into the open window of the website (see Fig. 16 above) or click on the "Browse" button and select the activation file. Then click on "Send".

The activation code will then be generated and displayed on the website. Make a note of the activation code and continue the activation under the menu item "Help / License Data and Activation".

If the NCP activation server detects that you are entitled to a newer software license and the license key matches the installed software, the new license key is automatically displayed during activation. Make a note of the new license key if you want to activate the new features. Finally, use the new license key after you have completed the activation.

The second step of the *offline* version is initiated via the interface menu "Help / License Data and Activation". "Step 2" is selected automatically.

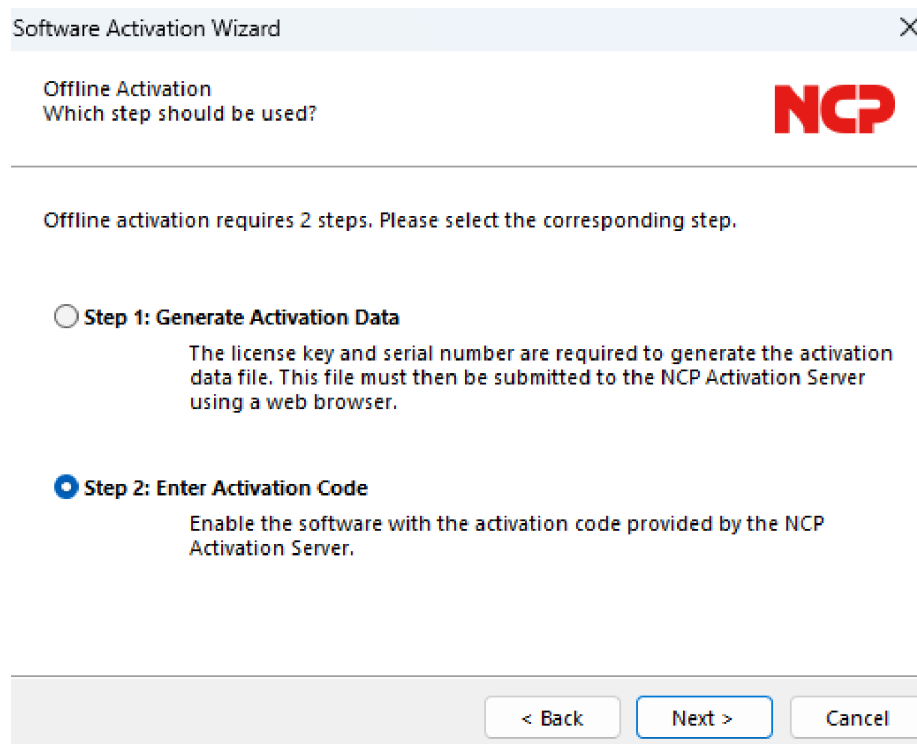


Fig. 17: Step-by-step instructions for the offline version

A window of the activation wizard for entering the activation code then opens. Once you have entered it, you can click "Next".

If you have received a new license key from the NCP activation server during *offline* activation (see above when displaying the activation code), also enter this license key for a license update.

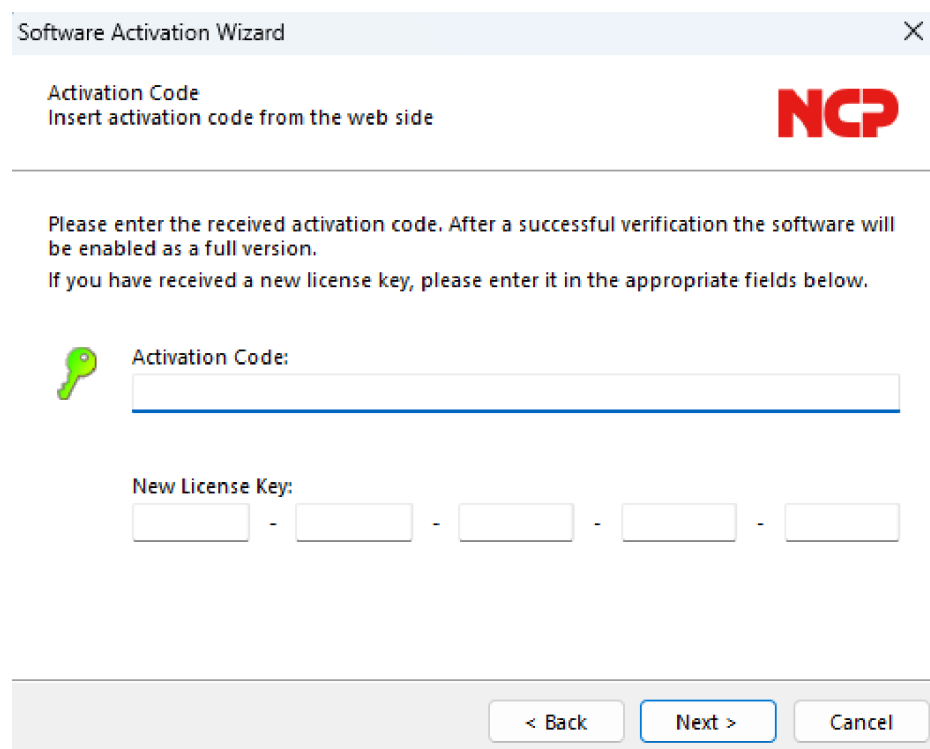


Fig. 18: Entering the activation code and the new license key

Click on "Next". The license data is checked and accepted. The *offline* activation is completed with the following window.

Once the activation is complete, the license data window shows that the software used is a correctly activated full version.

Check for updates

Under the menu item "Search for Updates" in the interface menu under "Help", you can check whether NCP has newer software than the one you have installed. This is also possible if a test version has been installed. If a newer version is available at NCP, a software update is always possible.

The software update is always subject to a charge if the newer version is a major release, recognizable by the change in the version number before the decimal point. For example: If a version 12.x is installed and the next software version has the number 13.x, a software update from 12.x to 13.x, and in particular the use of the new features, is subject to a charge.

The new features can only be used if the new software has been activated with a new license key after installation, as described above under Software activation. The new license key is generated by entering the serial number and update key, which can be purchased from the local reseller, on the following website:

<https://www.ncp-e.com/en/service-resources/update-key>

The software update is always free of charge if the newer version is a service release, recognizable by the change in the decimal places after the decimal point. The new features can be used without activating a new license key as soon as the new software has been installed. A service release contains bug fixes and compatibility enhancements, among other things.

Software Updates

Once you have selected the "Search for updates" menu item, the software update wizard opens. It helps you to search for newly available software. To be able to check for new updates, you need an Internet connection. If you want to use the Entry Client to connect to the Internet, make sure that port 80 (for HTTP) is enabled when the firewall is activated.

If a proxy server is configured in the operating system, these settings can be adopted. If the proxy settings are configured correctly, click on "OK". The wizard now searches for newly available software updates via the Internet connection.

If a software update is available, it will be displayed. (A version can also differ only by the build number.) Click on "Next" if you want to use the latest software. This will download the installation package for the latest software.

Click on "Finish" to end the wizard and start the installation of the software update.

After starting the Installshield Wizard, select the installation language as with the standard installation and then answer the update question with "Yes". The installation is then carried out automatically. It is complete when you have restarted the computer.

